

PRINCESS F62 - 2018

PRICE: 1.390.000 GBP ex. VAT



Twin Volvo D13-900 (2x 900 hp) diesel engines • White hull • 3 Cabins accommodating 6 Guests plus 2 Crew • Airconditioning/heating reverse cycle • Underwater transom lights • Exterior lighting upgrade • Onan Generator 19kW 1705 working hours • Bow and stern thruster • Seakeeper Gyro Stabilizer • Starboard cabin with double berth conversion with powered sliding mechanism on inboard berth • LED TV's

PLEASE CONTACT US FOR MORE INFORMATION ON THIS PRINCESS F62



PRINCESS F62

SPECIFICATION

BUILDER/DESIGNER

Year: 2018
Construction: GRP

ENGINES

No. of Engines: 2
Make: Volvo
Model: D13-900
Fuel Type: Diesel
Hours: 657 hrs
Total Power: 1800hp

ACCOMODATION

Berths: 6 + 2 in crew cabins
Cabins: 3 + 1 crew cabin

DIMENSIONS

Length: 19.17 m
Beam: 5.03 m

TANKS

Water: 1 x 793 l
Fuel: 1 x 3400 l

LOCATION

Tivat, Montenegro

HULL COLOUR

White hull

PRINCESS F62

INVENTORY

DECK EQUIPMENT

- Elector-hydraulic telescopic passarelle (3.5m) with automatic handrails
- Third station controls in cockpit (engine controls, engine emergency stops and thruster controls)
- Passarelle to be wired via the master switch in addition to its own switch
- Additional 20m of 10mm anchor chain to give a total of 60m
- Hydraulic operated Bimini top with LED overhead lighting
- Bimini Top – Charcoal Grey Sunbrella canvas, two tone Supreme with linen underside
- Illuminated crown logo to transom face (white)
- Underwater transom lights, 4 Lumishore SMX52 White
- Stern docking lights
- Exterior lighting upgrade package - Includes: additional deck level lights on side decks, transom and flybridge deck (x12), and pop up lanterns to flybridge circular seating area (x2)
- Exterior upholstery including Helm seat upholstery in Comfort Exterior II Met
- Foredeck sunbed cushions and seating in Comfort Exterior II Met

NAVIGATION EQUIPMENT

- Raymarine HD colour radar with 24" 4Kw radome
- Remote control keypad (RMK-9) for GS multifunction display fitted at lower and upper helm
- Raymarine i70s 4" multifunction display at lower and upper helm
- International VHF
- European Version Plotter Charts
- Raymarine AIS Class B transponder interfaced with chartplotter & with 8ft (2.4m) aerial

SHIPS SYSTEMS

- Onan Generator 19kW 1705 working hours
- Continental 220V/240V Sockets
- Variable speed bow and stern thrusters (variable speed 350KgF)
- Seakeeper Gyro Stabilizer (NG9)

INTERIOR FITOUT

- Walnut Interior wood Satin finish
- Door from passageway to port side forward bathroom – can be used as day toilet
- Galley worktop in Ice Crystal
- Starboard cabin with double berth conversion with powered sliding mechanism on inboard berth
- Aft Cabin fit out
- Bathroom worktops in Carrera White – gloss finish with Koko White – satin finish floors
- Quartz Leather upholstery in saloon and dinette
- Mosquito screens for all portlights

AUDIO VISUAL EQUIPMENT

Premium Audio Upgrade

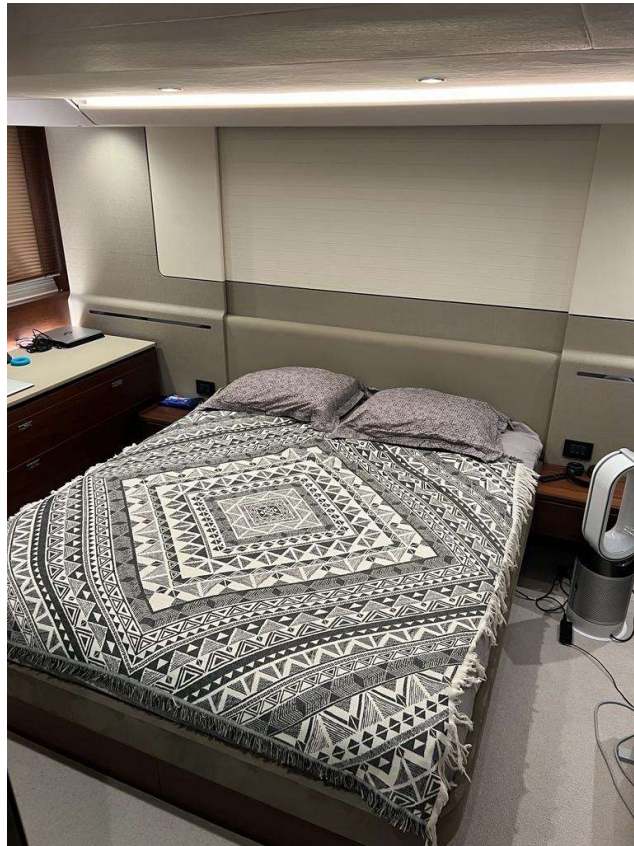
- Deck Saloon – Harman Kardon 5.1 Blu-ray system (with Bluetooth connectivity) and KEF speakers
- Owner's Stateroom - Harman Kardon 2.1 Blu-ray system (with Bluetooth connectivity) and KEF speakers
- Forward Guest Cabin - 32" HD LED TV with Fusion MS-AV750 Radio/DVD/MP3 player with Bluetooth facility
- Multifunctional digital controller for A/V equipment (Harmony touch with charging dock and 220v power point)
- Starboard Guest Cabin - 28" HD LED TV, Naim Uniti Atom audio system with Bluetooth, multi-zone streaming
- Waterproof cockpit speakers with local control (linked to flybridge system)

PRINCESS F62 PHOTOS



PRINCESS F62





Princess F62 - Master cabin



Princess F62 - Saloon



Princess F62 - Flybridge



Princess F62 - Flybridge



Princess F62- Flybridge



Princess F62 - Flybridge





Princess F62 - Saloon



Princess F62 - Saloon



Princess F62 - Saloon



Princess F62 - Saloon



Princess F62 - Saloon



Princess F62 - Dining



Princess F62 - Galley



Princess F62 - Galley



Princess F62 - Stairway



Princess F62 - Lower helm



Princess F62 - Lower helm



Princess F62 - Lower helm



Princess F62 – Guest cabin



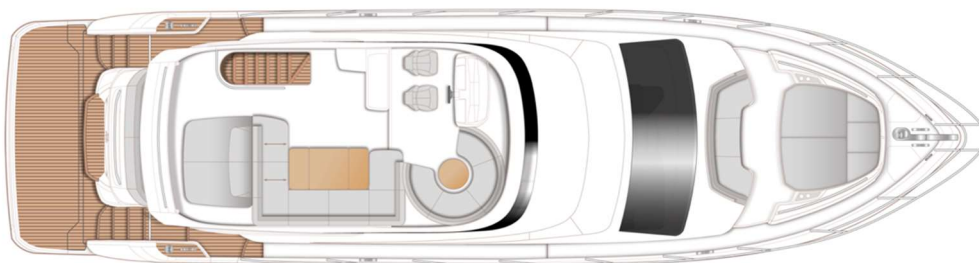
Princess F62 – Master cabin



Princess F62 - Guest cabin

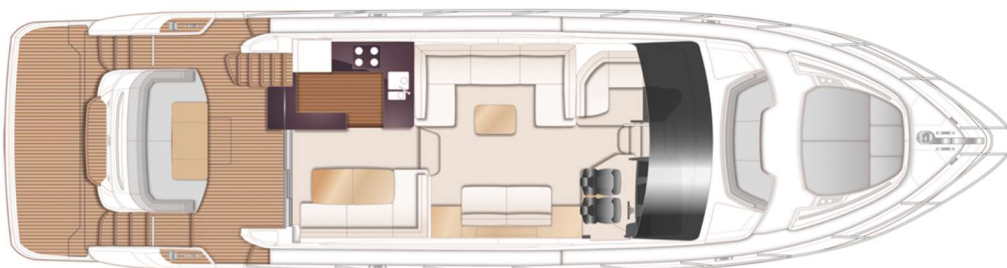


Princess F62



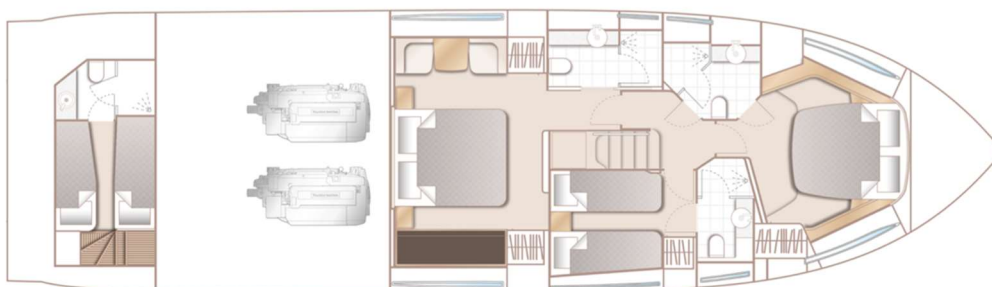
FLYBRIDGE

Princess F62



MAIN DECK

Princess F62



LOWER DECK

Princess F62