



V78

V78

With a bold exterior concealing a spacious interior, the all-new Princess V78 is the flagship of our V Class range. Central access from the hydraulic bathing platform leads you between twin sunbeds to a configurable cockpit then onwards to her well-equipped galley, dining area and saloon. Her foredeck features innovative seating with sunpads which can be converted to create additional aft facing seats. Her cavernous main deck saloon opens up through an electric roof above, or seamlessly to the outside through full length side windows. Below deck, eight guests enjoy four large en suite cabins, all bathed in natural light from her contemporary hull windows and a further twin cabin aft for occasional guests or crew. With twin MAN V12 engines taking you up to 39 knots, she is power performing with elegance in our finest V Class experience.

Com um exterior ousado que oculta um interior espaçoso, o novo Princess V78 é o carro-chefe da nossa Classe V. O acesso central através da plataforma de banho hidráulica o conduz entre duas espreguiçadeiras para um cockpit configurável e, então, para a cozinha, sala de jantar e salão bem equipados. A coberta de proa apresenta características inovadoras com solários que podem ser convertidos para criar assentos adicionais à ré. O salão do convés principal abre-se através de um teto solar, ou diretamente para o exterior através de janelas laterais que cobrem todo o comprimento. Abaixo do convés, oito hóspedes podem desfrutar de quatro cabines privadas tipo suite, todas banhadas por luz natural através de suas janelas de casco contemporâneas e mais uma cabine dupla à ré para hóspedes ocasionais ou tripulação. Com dois motores MAN V12 capazes de transportá-lo a até 39 nós, ele combina potência com elegância em nossa melhor experiência da Classe V.

Con un exterior atrevido que oculta un interior espacioso, el nuevo Princess V78 es el buque insignia de nuestra gama Clase V. El acceso central desde la plataforma hidráulica de baño le lleva entre dos tumbonas-solárium a una bañera configurable, y luego a su bien equipada cocina, comedor y salón. Su cubierta de proa cuenta con asientos innovadores con tumbonas para tomar el sol, que se pueden convertir para crear asientos adicionales orientados hacia la popa. Su cavernoso salón en la cubierta principal se abre al cielo a través de un techo eléctrico, o le conecta a la perfección con el exterior a través de ventanas laterales de largo completo. Bajo cubierta, ocho huéspedes disfrutan de cuatro grandes camarotes en suite, todos bañados con la luz natural de las modernas ventanas de su casco, y otro camarote doble a popa para huéspedes ocasionales o para la tripulación. Con dos motores MAN V12 que le llevan hasta 39 nudos, aúna potencia y elegancia en nuestra mejor experiencia de Clase V.

全新Princess V78游艇不仅拥有豪华大气的外观,更拥有宽敞的内部空间,它是我们V Class系列游艇中最好的型号之一。通过液压升降游泳平台进入中央通道,您可以穿过双日光浴床来到配置丰富的后甲板,然后前往设施齐全的厨房、用餐区和客厅。她的前甲板设有带日光浴垫的创新座位,可以将其转换成朝向船尾的额外座位。她洞穴状的主甲板客厅通过上方的电动遮阳棚可以敞开,或通过全长侧窗一览无余地欣赏外面的世界。甲板下方可容纳八位客人,带有四间精美的套房客舱,全都沐浴在透过充满现代感的船体窗户射入的自然光照之下,您也可临时到来的客人或船员排出一个船尾双人舱。她配备两台MAN V12发动机,航速可以达到39节,不仅动力强劲,而且身姿优雅,带给您V Class系列游艇的顶级体验。

Mit ihrem markanten Äußeren, das ein geräumiges Innenleben verbirgt, ist die brandneue Princess V78 das Flaggschiff unserer V Class-Serie. Ein mittiger Zugang von der hydraulischen Badeplattform führt zwischen zwei Sonnenbereichen hindurch über ein komfortables Cockpit weiter in die gut ausgestattete Pantry mit Essbereich und zum Salon. Auf dem Vorschiff befinden sich innovative Sitzbereiche mit Sonnenliegen, die in zusätzliche, nach achtern ausgerichtete Sitze umgewandelt werden können. Der enorme Decksalon öffnet sich über ein elektrisches Dach nach oben oder stellt über sich die gesamte Länge erstreckende Seitenfenster eine nahtlose Verbindung nach draußen her. Unter Deck können sich acht Gäste auf vier große, durch moderne Rumpffenster in Tageslicht getauchte Kabinen mit eigenem Bad freuen. Für gelegentliche Gäste oder Crew steht achtern eine Kabine mit zwei Einzelbetten zur Verfügung. Angetrieben von zwei MAN V12 Motoren und einer Höchstgeschwindigkeit von bis zu 39 Knoten begeistert diese Yacht mit einem kraftvoll eleganten V Class-Erlebnis, das seinesgleichen sucht.

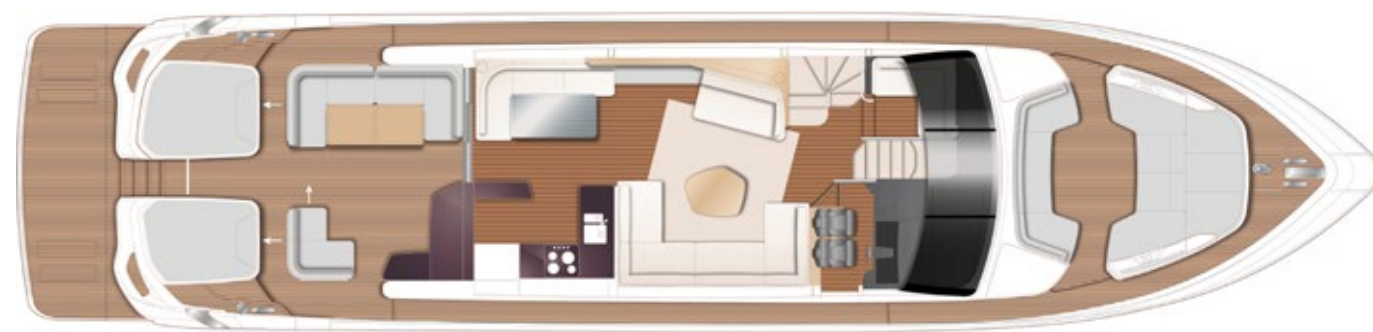


PRINCIPAL DIMENSIONS

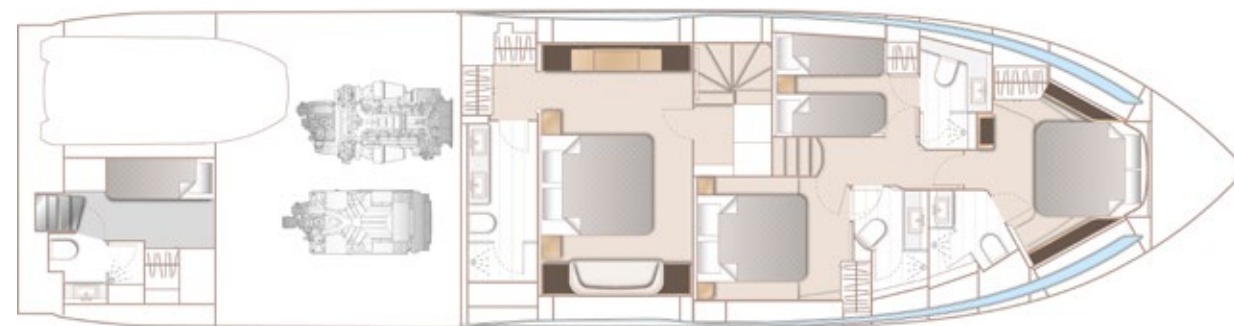
Length overall (incl. pulpit)	80ft 4in (24.48m)
Length overall (excl. pulpit)	78ft 10in (24.03m)
Beam	18ft 11in (5.76m)
Draft	5ft 4in (1.62m)
Displacement approx.	53,605kg (118,179lbs)*
Fuel capacity	1,320 gal/1,585 US gal/6,000l
Water capacity (incl. calorifier)	297 gal/356 US gal/1,350l

ENGINES

Twin MAN V12-1900 (2 x 1,900hp)	Speed range: 37-39 knots†
---------------------------------	---------------------------



MAIN DECK



LOWER DECK

DECK FITTINGS

- Teak-laid transom platform, cockpit deck, side decks and foredeck walkthrough
- Reversible electric anchor winch with foredeck and helm position controls
- Stemhead roller with automatic anchor launch and retrieve
- Self-stowing 50kg/10lbs Delta anchor with 100m of chain
- Twin electric-powered sternline mooring winches
- Storage lockers for fenders, ropes and foredeck sunbed cushions
- Foredeck seating and sunbathing area
- Stainless steel cleats, fairleads and handrails
- LED deck level lighting
- Freshwater deck/anchor wash

COCKPIT

- Configurable seating area with teak folding table
- Twin sunbeds aft with lazarette and garage with electro-hydraulic door and tender launch system with electric winch below (4.45m tender)
- Central transom gate leading to bathing platform with electro-hydraulic raise/lower mechanism, foldaway swimming ladder and hot and cold transom shower
- Wetbar including sink with electric barbecue and top loading coolbox
- Naim audio system with waterproof speakers (2)
- Lockable gas strut assisted hatch to engine room
- Liferaft storage locker
- Transom access to crew cabin/engine room
- Remote control 3.6m telescopic passarelle with folding handrail
- Cockpit cover

HELM POSITION

- Twin helm seats with electric adjustment for helmsman
- Helmsman's door to side deck and electric opening window to port
- Full engine instrumentation including fuel gauges, exhaust temperature, fuel contamination alarms and rudder position indicator
- Navigation system including colour radar, GPS and chartplotter (3 displays), VHF/RT, speed and distance log, echo sounder with alarm, autopilot and high speed magnetic compass
- Controls for bow thruster, windscreen wipers, bilge pump and trim tabs (with indicators)
- Chart storage
- 24v and 240v control panel
- Red night lighting
- Toughened glass screen (clear for night vision)

DECK SALOON

- Stainless steel framed sliding doors to aft cockpit with integrated opening window aft of galley
- U-shaped seating area with two-seater chaise and coffee table
- L-shaped dining area with glass table
- Entertainment centre incorporating 55" UHD LED TV on electric raise/lower mechanism with Naim audio system and ceiling mounted speakers (2)
- Sideboard unit with bottle and glass storage and refrigerator
- Electric opening roof

GALLEY

- 4-zone induction hob
- Combination microwave/convection oven with grill
- Twin stainless steel sinks with mixer tap
- Full height refrigerator/deep freeze with integrated icemaker
- Dishwasher
- Storage lockers, cupboards and drawers
- Electrically operated sliding glass partition from saloon

ACCOMMODATION

- All cabins and bathrooms feature opening portholes and airconditioning outlets
- All cabins feature 220/240v power points
- All mattresses pocket sprung (excluding crew)
- All bathrooms feature electric freshwater toilets, extractor fan and 240v shaver points

OWNER'S STATEROOM

- Large double bed with drawers below
- Dressing area with wardrobes with hanging and drawer storage
- Storage lockers and drawers
- Dressing table with chair
- Sofa
- Built-in safe
- 40" UHD LED TV, DVD Blu-ray with Naim audio system with speakers (2) and subwoofer
- En suite bathroom
- Dedicated access with lobby area
- Combination washer/dryer and storage area is fitted in the lobby area with the option of fitting separate washing machine and tumble dryer

FORWARD GUEST CABIN

- Large double bed with drawers below
- Wardrobe with shelves
- Dressing table with stool
- Deck hatch
- Storage lockers and drawers
- Naim audio system
- En suite bathroom

STARBOARD GUEST CABIN

- Large double bed with drawers below (with the option of sliding berths)
- Wardrobe with shelves
- Dressing table with stool
- Storage lockers and drawers
- En suite bathroom with day access

PORT GUEST CABIN

- Two single beds with drawers below (with the option of powered conversion to double)
- Wardrobe with shelves
- Storage lockers and drawers
- En suite bathroom

CREW CABIN

- Two single beds, wardrobe and storage lockers
- Storage unit with space for optional fridge
- Bathroom with shower, electric freshwater toilet and washbasin

INTERIOR FINISH

- Furniture in Rovere Oak with satin or high gloss finish. Walnut or Alba Oak available as an option
- Solid surface worktops and tiled floors in all guest bathrooms
- Galley worktops in choice of granite or quartz
- Choice of high quality carpet and upholstery fabric from extensive range
- Blinds or sunscreens to all windows and portholes
- Timber-laid galley, saloon and helm floors
- Crew cabin fitted with non slip safety flooring

POWER AND DRIVE SYSTEMS

- 5-bladed propellers in nickel aluminium bronze
- Bow thruster (240Kg/529lbf)
- Power-assisted electro-hydraulic steering system with hydraulic back-up
- Electronic engine and gear shift controls
- Dripless shaft seals
- Engine room extractor fan with electronic time delay

ELECTRICAL SYSTEMS

24 Volt:

- 4 x heavy duty batteries for engine starting
- 6 x heavy duty auxiliary batteries
- 2 x 60-amp battery charger charges both banks of batteries via an automatic switch charging system
- Remote battery master switches with control switch at main panel
- LED lighting throughout

220/240 Volt:

- 22.5kW diesel generator in own starting battery and specially silenced exhaust
- 2 x 63 amp shore support inlet
- Earth leakage safety trip, polarity check system, circuit breakers on all circuits
- Power points in all areas

FUEL SYSTEM

- Fuel tanks (in NS8 marine grade alloy) with interconnection system giving 1,320 gal/1,585 US gal/6,000l capacity
- Fuel fillers on port and starboard side decks
- High capacity duplex fuel filters/water traps with audible and visual fuel contamination warning system
- Remote fuel cocks in cockpit locker

WATER SYSTEM

- 253 gal/304 US gal/1,150l plus 44 gal/53 US gal/200l hot water calorifier and heated by engines and 240v immersion heater
- Water level gauge
- Deck filler
- Electric freshwater WC system with 99 gal/119 US gal/450l holding tank

AIR CONDITIONING

- 156,000Btu chilled water system with outlets in all accommodation areas and incorporating reverse cycle heating with linked windscreen demist system. Suitable for tropical conditions (40°C)

FIRE EXTINGUISHERS

- Automatic/manual override fire extinguishers in engine room with warning system at helm position
- Hand-operated fire extinguishers (7) in all cabins, galley and helm position

BILGE PUMPS

- Automatic electric bilge pumps (7)
- High-capacity manual bilge pumps with valve system and suction points in same areas

OTHER ITEMS SUPPLIED AS STANDARD

- Set of cutlery, crockery and glasses (8)
- Set of towels (8 large, 8 small)
- Ensign staff
- Fenders (8) and warps (4)
- First aid kit
- Tool kit
- Set of manuals
- Quilted bedspreads supplied to all cabins (except optional crew cabin)

